

CORCO CHEMICAL CORPORATION



PRODUCT SPECIFICATION

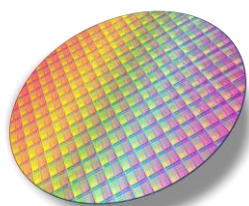
Manufacturers of ACS
Reagent and Semiconductor
Grade Chemicals

Nitric Acid SEMICONDUCTOR GRADE

SPECIFICATION	MAXIMUM LIMITS
Assay (as NHO_3)	68-70% min
Color (APHA)	10
Residue after Ignition	2 ppm
Chloride (Cl)	0.08 ppm
Sulfate (SO_4)	0.5 ppm
Phosphate (PO_4)	0.2 ppm
Heavy Metals (as Pb)	0.1 ppm
Arsenic & Antimony (as As)	0.005 ppm
Aluminum (Al)	0.5 ppm

SPECIFICATION	MAXIMUM LIMITS
Barium (Ba)	1 ppm
Boron (B)	0.1 ppm
Cadmium (Cd)	0.5 ppm
Calcium (Ca)	0.5 ppm
Chromium (Cr)	0.1 ppm
Cobalt (Co)	0.5 ppm
Copper (Cu)	0.05 ppm
Gallium (Ga)	0.1 ppm
Germanium (Ge)	0.1 ppm
Gold (Au)	0.5 ppm
Iron (Fe)	0.2 ppm

SPECIFICATION	MAXIMUM LIMITS
Lithium (Li)	1 ppm
Magnesium (Mg)	1 ppm
Manganese (Mn)	0.5 ppm
Nickel (Ni)	0.05 ppm
Potassium (K)	1 ppm
Silicone (Si)	1 ppm
Silver (Ag)	0.5 ppm
Sodium (Na)	1 ppm
Strontium (Sr)	1 ppm
Tin (Sn)	1 ppm
Zinc (Zn)	1 ppm



Office and Plant

299 Cedar Lane
Fairless Hills, PA 19030

Phone: 215-295-5006

Fax: 215-295-0781

Web: www.corcochem.com



CORCO CHEMICAL CORPORATION



PRODUCT SPECIFICATION

Manufacturers of ACS
Reagent and Semiconductor
Grade Chemicals

Nitric Acid

ACS REAGENT GRADE

SPECIFICATION	MAXIMUM LIMITS
Appearance	Colorless and free from Suspended mater or sediment
Assay	68% - 70%
Color (APHA)	10
Residue after Ignition	5 ppm
Chloride (Cl)	0.5 ppm
-----	-----

SPECIFICATION	MAXIMUM LIMITS
Heavy Metals (as Pb)	0.2 ppm
Iron (Fe)	0.2 ppm
Arsenic (As)	0.01 ppm
Sulfate (SO ₄)	1 ppm
-----	-----
-----	-----

Office and Plant
299 Cedar Lane
Fairless Hills, PA 19030

Phone: 215-295-5006
Fax: 215-295-0781
Web: www.corcochem.com

