

CORCO CHEMICAL CORPORATION



PRODUCT SPECIFICATION

Manufacturers of ACS
Reagent and Semiconductor
Grade Chemicals

Isopropyl Alcohol

ACS REAGENT GRADE

SPECIFICATION	MAXIMUM LIMITS
Assay	99.5% min.
Color (APHA)	10
Boiling Range	82.3C +/- 0.1C
Residue after Evaporation	.001%
Titratable Acid or Base	0.0001 meq/g
Water	0.2% max

SPECIFICATION	MAXIMUM LIMITS
Solubility in Water	Passes Test
Density (g/ml) @ 20 C	.7862-.7870
Density (g/ml) @ 25 C	.7830-.7840
Copper (Cu)	0.1 ppm
Nickel (Ni)	0.1 ppm
Iron (Fe)	0.1 ppm

Office and Plant
299 Cedar Lane
Fairless Hills, PA 19030

Phone: 215-295-5006
Fax: 215-295-0781
Web: www.corcochem.com



CORCO CHEMICAL CORPORATION



PRODUCT SPECIFICATION

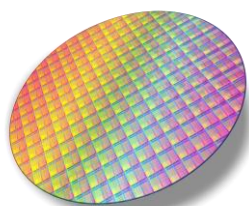
Manufacturers of ACS
Reagent and Semiconductor
Grade Chemicals

Isopropyl Alcohol SEMICONDUCTOR GRADE

SPECIFICATION	MAXIMUM LIMITS
Assay (as CH ₃ CHOH CH ₃)	99.5% min
Color (APHA)	10
Acidity	0.2 ueg/g
Alkalinity	0.1 ueg/g
Water	0.05%
Residue after Evaporation	5 ppm
Solubility in Water	To Pass Test
Chloride (Cl)	0.2 ppm
Phosphate (PO ₄)	0.5 ppm
Heavy Metals (as Pb)	0.2 ppm
Arsenic & Antimony (as As)	0.01 ppm

SPECIFICATION	MAXIMUM LIMITS
Aluminum (Al)	1 ppm
Barium (Ba)	1 ppm
Boron (B)	0.01 ppm
Cadmium (Cd)	1 ppm
Calcium (Ca)	1 ppm
Chromium (Cr)	0.5 ppm
Cobalt (Co)	0.1 ppm
Copper (Cu)	0.1 ppm
Gallium (Ga)	0.5 ppm
Germanium (Ge)	1 ppm
Gold (Au)	0.5 ppm
Iron (Fe)	0.1 ppm

SPECIFICATION	MAXIMUM LIMITS
Lithium (Li)	1 ppm
Magnesium (Mg)	1 ppm
Manganese (Mn)	1 ppm
Nickel (Ni)	0.1 ppm
Potassium (K)	1 ppm
Silicone (Si)	1 ppm
Silver (Ag)	0.5 ppm
Sodium (Na)	1 ppm
Strontium (Sr)	1 ppm
Tin (Sn)	1 ppm
Zinc (Zn)	1 ppm



Office and Plant

299 Cedar Lane
Fairless Hills, PA 19030

Phone: 215-295-5006

Fax: 215-295-0781

Web: www.corcochem.com

