

# CORCO CHEMICAL CORPORATION



## PRODUCT SPECIFICATION

Manufacturers of ACS  
Reagent and Semiconductor  
Grade Chemicals

# Hydrofluoric Acid

## ACS REAGENT GRADE

SPECIFICATION	MAXIMUM LIMITS
Appearance	Colorless and free from Suspended mater or sediment
Assay	48% - 51%
Fluosilicic Acid (H <sub>2</sub> SiF <sub>6</sub> )	0.01%
Residue after Ignition	5 ppm
Phosphate (PO <sub>4</sub> )	1 ppm

SPECIFICATION	MAXIMUM LIMITS
Copper (Cu)	0.1 ppm
Chloride (Cl)	5 ppm
Iron (Fe)	1 ppm
Sulfate & Sulfite (as SO <sub>4</sub> )	5 ppm
Arsenic (As)	0.05 ppm
Heavy Metals (as Pb)	0.5 ppm

**Office and Plant**  
299 Cedar Lane  
Fairless Hills, PA 19030

**Phone:** 215-295-5006  
**Fax:** 215-295-0781  
**Web:** [www.corcochem.com](http://www.corcochem.com)



# CORCO CHEMICAL CORPORATION

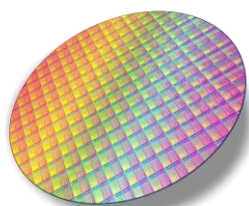


## PRODUCT SPECIFICATION

Manufacturers of ACS  
Reagent and Semiconductor  
Grade Chemicals

## Hydrofluoric Acid SEMICONDUCTOR GRADE

SPECIFICATION	MAXIMUM LIMITS	SPECIFICATION	MAXIMUM LIMITS	SPECIFICATION	MAXIMUM LIMITS
Assay (as HF)	48-51%	Barium (Ba)	0.5 ppm	Lithium (Li)	1 ppm
Color (APHA)	10	Boron (B)	0.05 ppm	Magnesium (Mg)	0.5 ppm
Residue after Ignition	5 ppm	Cadmium (Cd)	1 ppm	Manganese (Mn)	0.5 ppm
Fluosilicic Acid (H <sub>2</sub> SiF <sub>6</sub> )	0.01%	Calcium (Ca)	1 ppm	Nickel (Ni)	0.1 ppm
Chloride (Cl)	5 ppm	Chromium (Cr)	0.01 ppm	Potassium (K)	1 ppm
Sulfate & Sulfite (SO <sub>4</sub> )	5 ppm	Cobalt (Co)	0.5 ppm	Silver (Ag)	0.1 ppm
Phosphate (PO <sub>4</sub> )	1 ppm	Copper (Cu)	0.05 ppm	Sodium (Na)	1 ppm
Heavy Metals (as Pb)	0.1 ppm	Gallium (Ga)	0.05 ppm	Strontium (Sr)	1 ppm
Arsenic & Antimony (as As)	0.03 ppm	Germanium (Ge)	1 ppm	Tin (Sn)	1 ppm
Aluminum (Al)	0.05 ppm	Gold (Au)	0.5 ppm	Zinc (Zn)	1 ppm
		Iron (Fe)	0.5 ppm		



### Office and Plant

299 Cedar Lane  
Fairless Hills, PA 19030

**Phone:** 215-295-5006

**Fax:** 215-295-0781

**Web:** [www.corcochem.com](http://www.corcochem.com)

