

# CORCO CHEMICAL CORPORATION



## PRODUCT SPECIFICATION

Manufacturers of ACS  
Reagent and Semiconductor  
Grade Chemicals

# ACETONE

## ACS REAGENT GRADE

SPECIFICATION	MAXIMUM LIMITS
Assay	99.5% min.
Color (APHA)	10
Density (g/ml)@ 20C	.791-.793
Density (g/ml)@ 25C	.786-.789
Residue after evaporation	.001%
Solubility in Water	Passes Test
Titrateable Acid	0.0003 meq/g

SPECIFICATION	MAXIMUM LIMITS
Titrateable Base	0.0006 meq/g
Aldehyde (as HCHO)	0.002%
Isopropyl Alcohol	0.05%
Methanol	0.05%
Sub. Red. Permanganate	Passes Test
Water	.5% max
-----	-----

### Office and Plant

299 Cedar Lane  
Fairless Hills, PA 19030

**Phone:** 215-295-5006  
**Fax:** 215-295-0781  
**Web:** [www.corcochem.com](http://www.corcochem.com)



# CORCO CHEMICAL CORPORATION

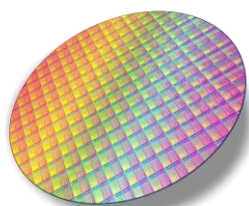


## PRODUCT SPECIFICATION

Manufacturers of ACS  
Reagent and Semiconductor  
Grade Chemicals

## ACETONE SEMICONDUCTOR GRADE

SPECIFICATION	MAXIMUM LIMITS	SPECIFICATION	MAXIMUM LIMITS	SPECIFICATION	MAXIMUM LIMITS
Assay ((CH <sub>3</sub> ) <sub>2</sub> CO)	99.5 min.	Aluminum (Al)	1 ppm	Iron (Fe)	0.1 ppm
Color (APHA)	10	Barium (Ba)	1 ppm	Lithium (Li)	1 ppm
Acidity	0.3 ueg/g	Boron (B)	0.2 ppm	Magnesium (Mg)	1 ppm
Alkalinity	0.5 ueg/g	Cadmium (Cd)	1 ppm	Manganese (Mn)	1 ppm
Water (HzO)	0.5%	Calcium (Ca)	1 ppm	Nickel (Ni)	0.1 ppm
Residue after Evaporation	5 ppm	Chromium (Cr)	0.5 ppm	Potassium (K)	1 ppm
Solubility in Water	To pass test	Cobalt (Co)	0.1 ppm	Silicon (Si)	1 ppm
Chloride (Cl)	0.2 ppm	Copper (Cu)	0.1 ppm	Silver (Ag)	0.5 ppm
Phosphate (PO <sub>4</sub> )	0.1ppm	Gallium (Ga)	0.5 ppm	Sodium (Na)	1 ppm
Heavy Metals (as Pb)	0.2 ppm	Germanium (Ge)	1 ppm	Strontium (Sr)	1 ppm
Arsenic & Antimony (ps As)	0.01ppm	Gold (Au)	0.5 ppm	Tin (Sn)	1 ppm
				Zinc(Zn)	1 ppm



### Office and Plant

299 Cedar Lane  
Fairless Hills, PA 19030

Phone: 215-295-5006

Fax: 215-295-0781

Web: [www.corcochem.com](http://www.corcochem.com)

